



GORILLAgrid



2017 Master Catalog

Sales & Service: 89 Turnpike Rd. Ipswich, MA 01938 | Ph: 1.978.356.2200
Manufacturing: 1 GM Drive Suite 5 Syracuse, NY 13206 | Ph: 1.315.437.6500

MC1-Q1-17

GORILLAgrid

MANUFACTURED BY



THE MOST INTELLIGENT, VERSATILE & STRONGEST CEILING GRID SYSTEM ON THE MARKET

Gorilla Grid is the backbone of the SBB Ceiling System. It offers the fastest installing, most versatile and strongest system on the market and is available as a “turn key” solution from engineering to installation.

SBB's ceiling systems are a proven way to save on installation costs, provide a working platform, mount roomside equipment and add an efficient ceiling system to your work environment.

Perfect for commercial, industrial and other speciality applications. Hospitals/healthcare, food processing, laboratories, cleanrooms, public spaces and more.





About Us

The founding partners of SBB, Inc. believe that their collective experiences and strong conviction to being creative, responsive, and efficient makes the company an excellent design resource for the pharmaceutical, biosciences, optics, and semiconductor manufacturing industries.

Several years from our founding date, SBB has matured into a progressive engineering firm that has expanded its' client portfolio to a national level. We attribute this positive growth to an uncompromising level of quality and effort delivered by our project staff.

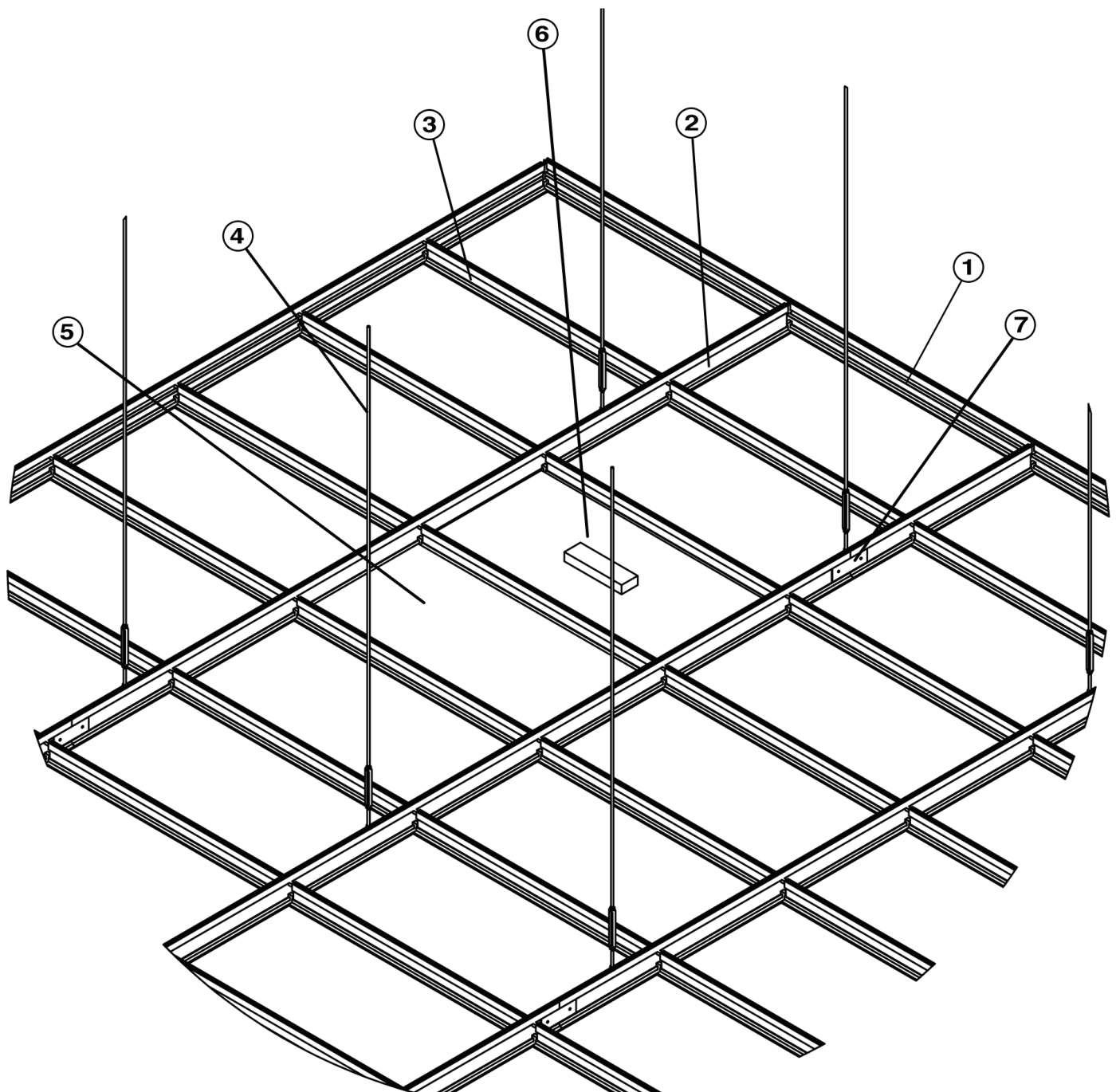
SBB is about professionalism – men and women who take pride in their work, and are dedicated to servicing the client. This philosophy begins at the top with our founding partners, Michael Sullivan and Vince Bongio. and trickles down through every discipline leader and staff professional.

All of our staff members have extensive experience in the “core” niche markets our company pursues, pharmaceuticals, bio-tech and bio-sciences, optics, and semiconductors. More importantly, we have assembled a cohesive team that works well together.

We take pride in our work. We take pride in putting our combined talents, skills and experience that spans over thousands of cleanroom applications to work for you.

What's more, when you work with us, you partner with us. We make sure every step of the process--from strategy, creative design, prototype, and production-- meets your objectives and schedule. And when we're done--we'll present you with a high quality finished product you're proud to call your own.

No matter what the industry. No matter what the job or specification, SBB is committed to delivering simple, cost effective cleanroom design solutions every time.

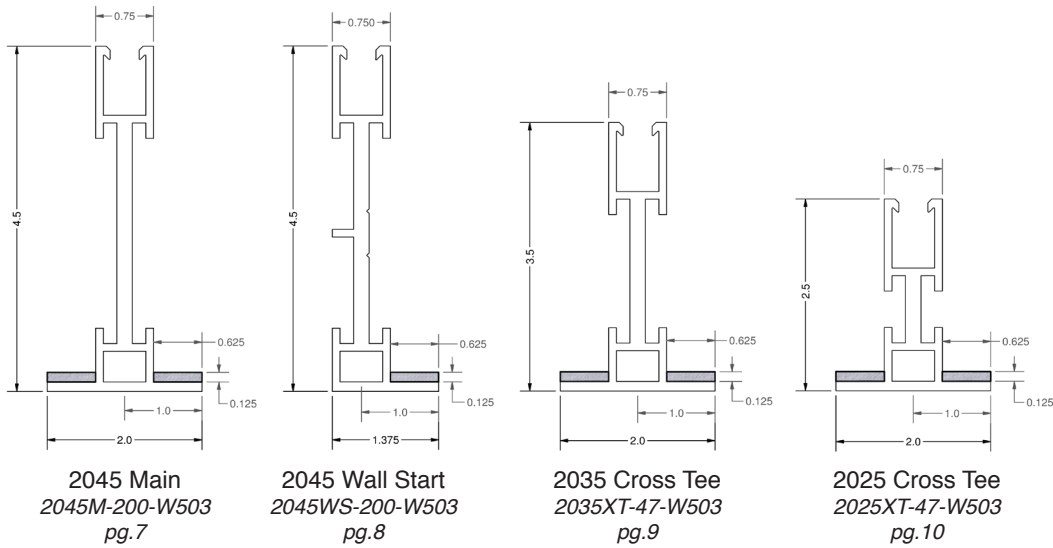
Parts Overview

Part

1. 2045 Wall Start
2. 2045 Main
3. 2035 Cross Tee
4. 3/8" Threaded Rod and Turnbuckle
5. 2'x4' Blank Panel
6. 2'x4' LED Light Panel
7. Splice Plate for 2045M

Part Number

2045WS-200-W503
 2045M-200-W503
 2035XT-47-W503
 HRA-3/8
 PM-3mm-24X48
 SLP2.4-50X
 SP-2045

2045 SD (Standard) Grid Parts



Hanging Parts



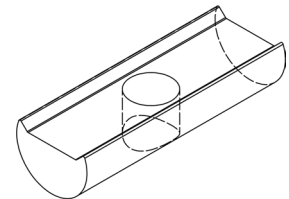
Standard 3/8" Hang Rod
Assembly
HRA-3/8
pg. 11



Turn Buckle
3/8" Thread
TB-3/8
pg. 12

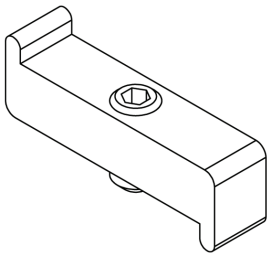


3/8" LH/RH Threaded Rod
Start - 9"
TRS-3/8-9
pg. 13

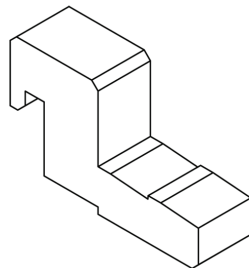


Grid Half Barrel Nut, 3/8"
Thread
PPE-2-1091F
pg. 14

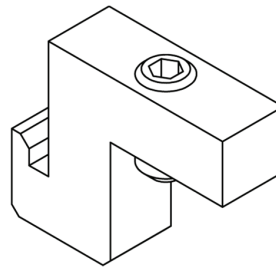
Connecting Parts



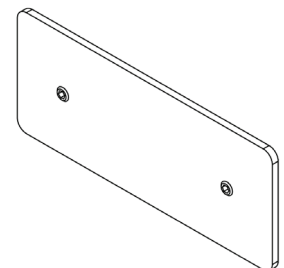
Cross Tee Rocker
Connector
PPE-1-1130F
pg. 15



Grid - to - Grid Bottom
Connector
PPE-1-1093F
pg. 16

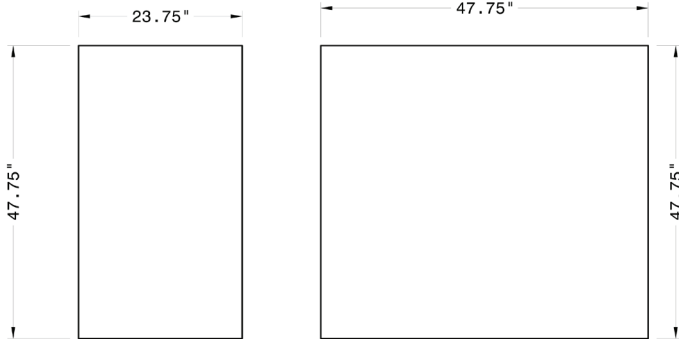


Like - to - Grid Top
Connector
PPE-1-1129F
pg. 17



2045 Splice Plate
SP-2045
pg. 18

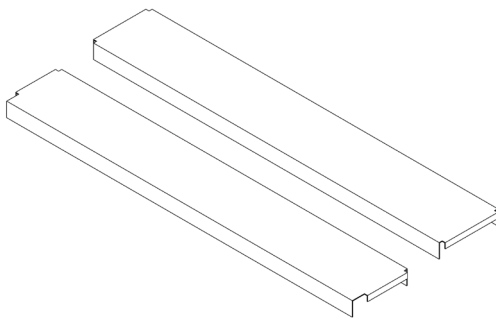
Basic Panels



2'x4' Ceiling Panel
PM-3mm-24x48
pg. 19

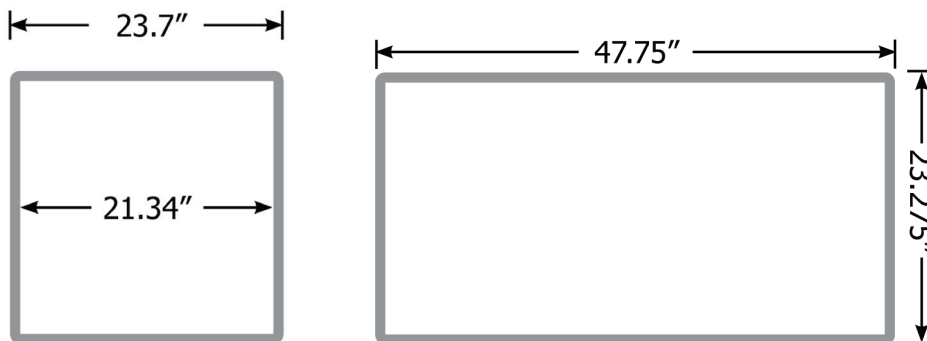
4'x4' Ceiling Panel
PM-3mm-48x48
pg. 20

Walkable System



Walkable System
WP-16G-48
pg. 21

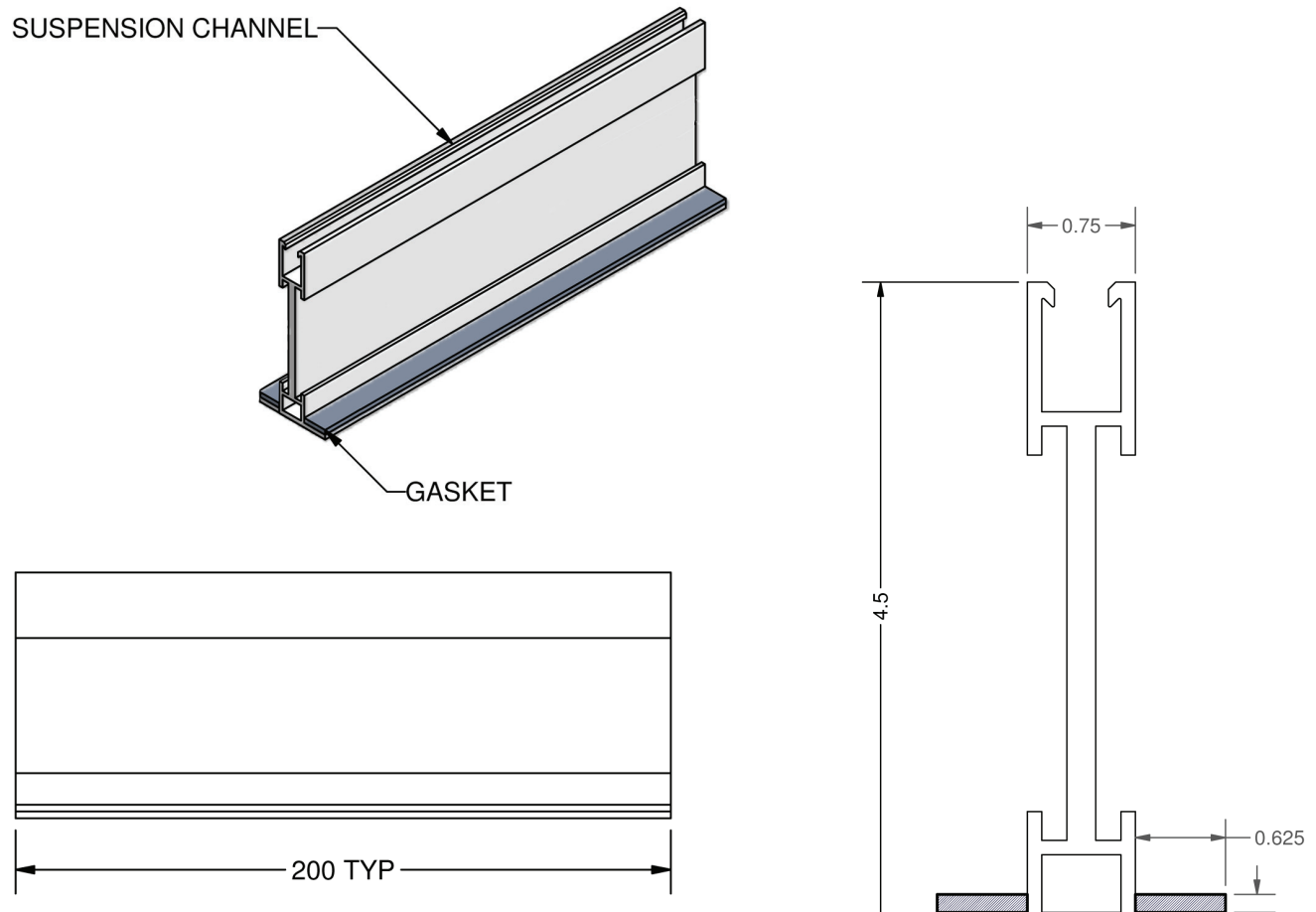
Lights



2'x2' LED Light Panel
SLP2.2-40X
pg. 22

2'x4' LED Light Panel
SLP2.4-50X
pg. 23

2045M - 200 - W503



PATENT NUMBER

US 6,779,315 B1

MATERIALS

- Main: Aluminum 6061-T6

FINISH

- Snowflake White Powder coated finish (Option Anodized)

DIMENSIONS

- 2045 - 4 1/2" vertical member
- Grid face 2"
- Main tee's 200" standard length (can be factory or field cut to appropriate length)

HANGING METHOD

- Mounting hardware 3/8" (standard)
- Full length (200") hangar capabilities

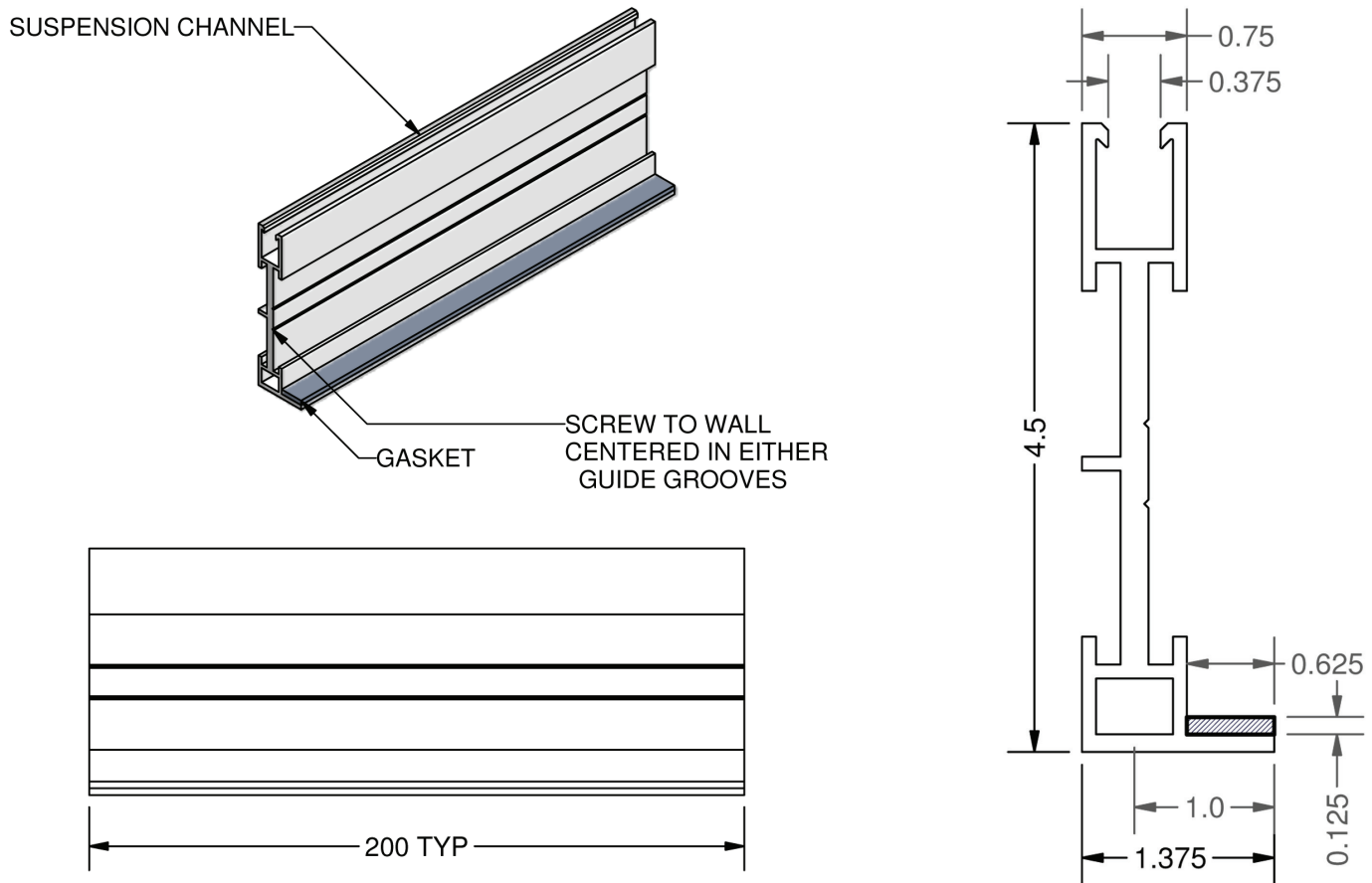
GASKET

- Factory installed gasket or silicone seal

STANDARDS

- Fully compliant with Current Good Manufacturing Practices (CGMP) for ISO cleanroom standards

2045WS - 200 - W503



PATENT NUMBER

US 6,779,315 B1

MATERIALS

- Main: Aluminum 6061-T6

FINISH

- Snowflake White Powder coated finish (Option Anodized)

DIMENSIONS

- 2045WS - 4 1/2" vertical member
- Grid face 2"
- Main tee's 200" standard length (can be factory or field cut to appropriate length)

HANGING METHOD

- Mounting hardware 3/8" (standard)
- Full length (200") hangar capabilities

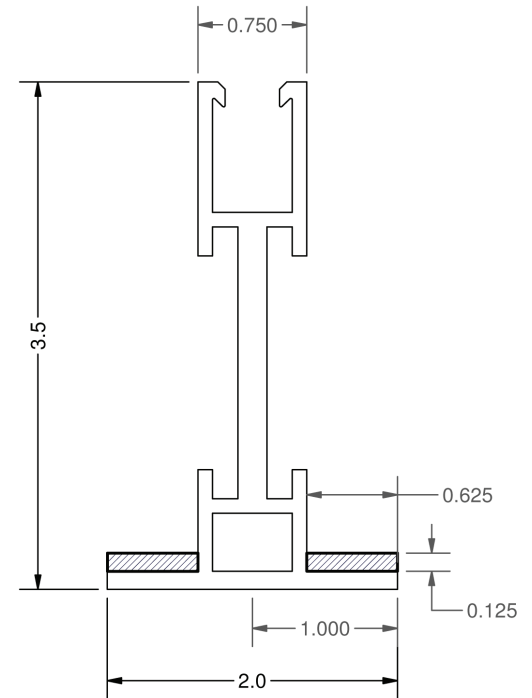
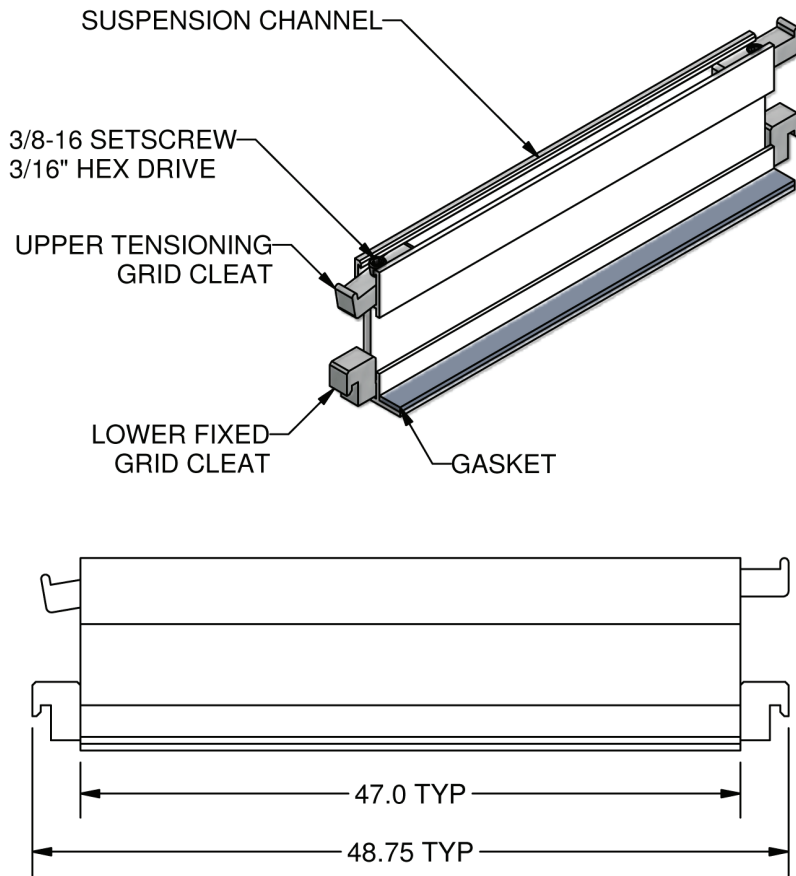
GASKET

- Factory installed gasket or silicone seal

STANDARDS

- Fully compliant with Current Good Manufacturing Practices (CGMP) for ISO cleanroom standards

2035XT - 47 - W503



PATENT NUMBER

US 6,779,315 B1

MATERIALS

- Main: Aluminum 6061-T6

FINISH

- Snowflake White Powder coated finish (Option Anodized)

DIMENSIONS

- 2035 - 3 1/2" vertical member
- Grid face 2"
- Cross Tee 47" width (can be factory or field cut to appropriate length)
- 5 lbs. apiece

HANGING METHOD

- Mounting hardware 3/8" (standard)

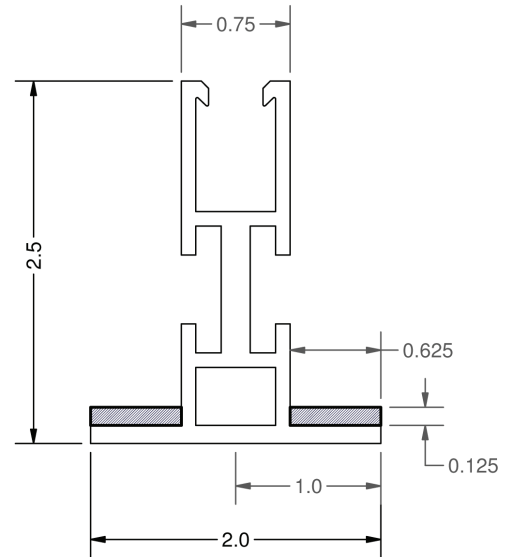
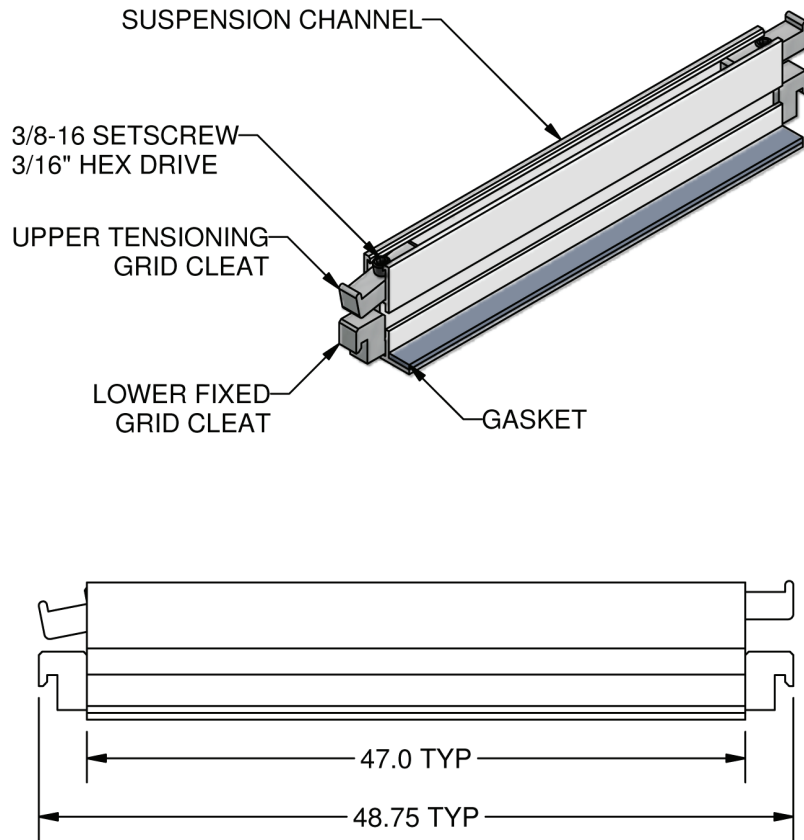
GASKET

- Factory installed gasket or silicone seal

STANDARDS

- Fully compliant with Current Good Manufacturing Practices (CGMP) for ISO cleanroom standards

2025XT - 47 - W503



PATENT NUMBER

US 6,779,315 B1

MATERIALS

- Main: Aluminum 6061-T6

FINISH

- Snowflake White Powder coated finish (Option Anodized)

DIMENSIONS

- 2025 - 2 1/2" vertical member
- Grid face 2"
- Cross Tee 47" width (can be factory or field cut to appropriate length)
- 4.5 lbs. apiece

HANGING METHOD

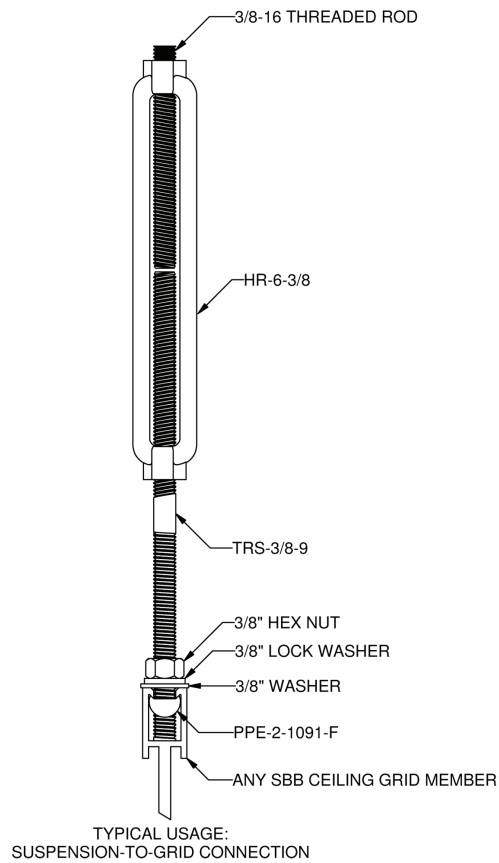
- Mounting hardware 3/8" (standard)

GASKET

- Factory installed gasket or silicone seal

STANDARDS

- Fully compliant with Current Good Manufacturing Practices (CGMP) for ISO cleanroom standards



MATERIALS

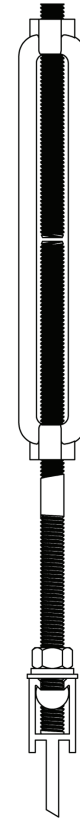
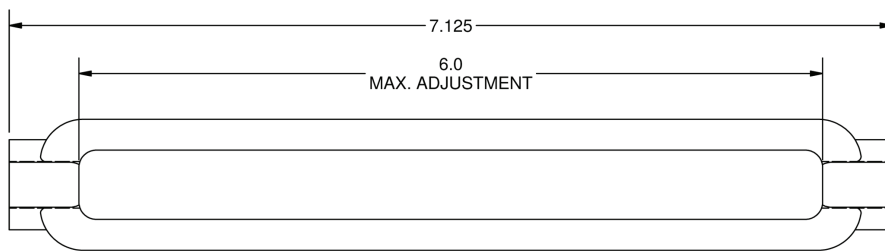
- Galvanized Steel, forged

DIMENSIONS

- Length: 7.125"
- Max Adjustment: 6.0"
- Thread: 3/8"-16
- WT. / EA: 0.45 lbs.

HANGING CAPACITY

- 1200 lbs.



TYPICAL USAGE:
SUSPENSION-TO-GRID CONNECTION

MATERIALS

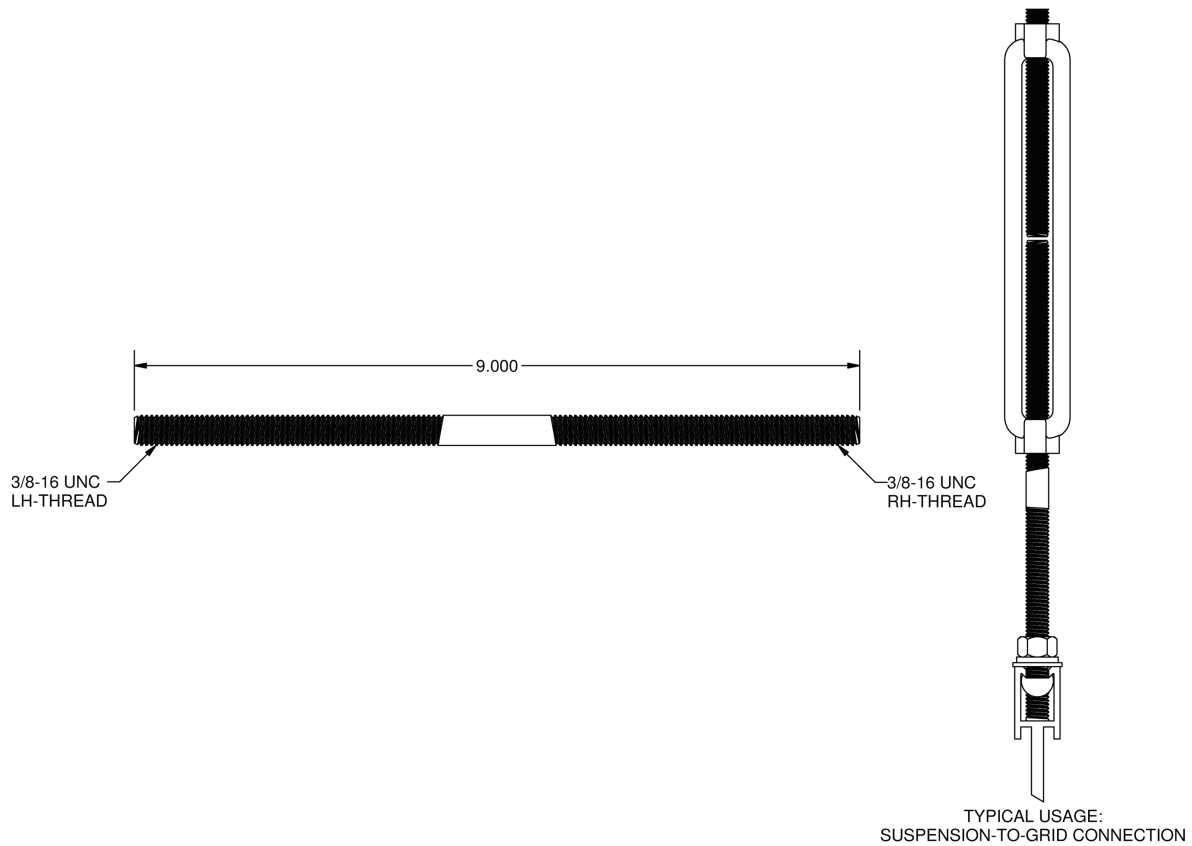
- Galvanized Steel, forged

DIMENSIONS

- Length: 7.125"
- Max Adjustment: 6.0"
- Thread: 3/8"-16
- WT. / EA: 0.45 lbs.

HANGING CAPACITY

- 1200 lbs.



MATERIALS

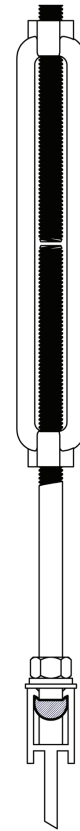
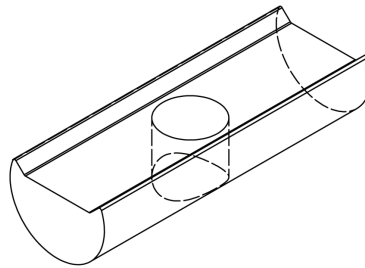
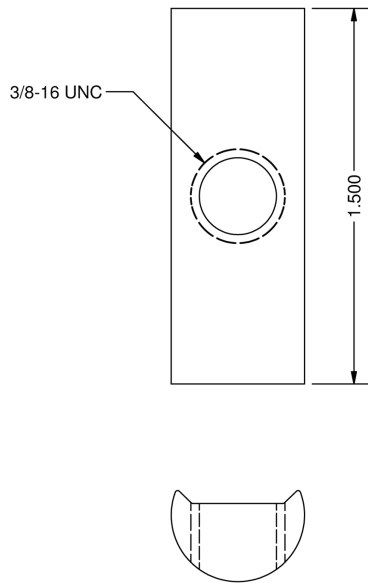
- Galvanized Steel, forged

DIMENSIONS

- Length: 9"
- Max Adjustment: 6.0"
- Thread: 3/8"-16
- WT. / EA: 0.25 lbs.

HANGING CAPACITY

- 600 lbs.



TYPICAL USAGE:
SUSPENSION-TO-GRID CONNECTION

MATERIALS

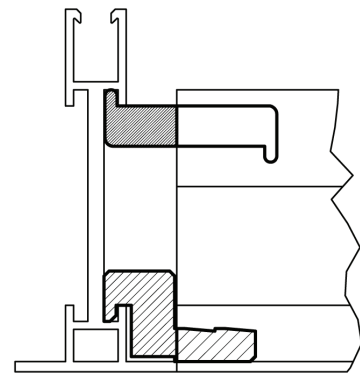
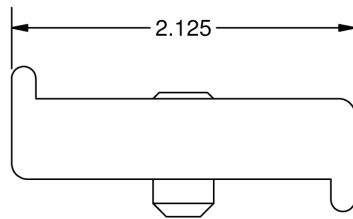
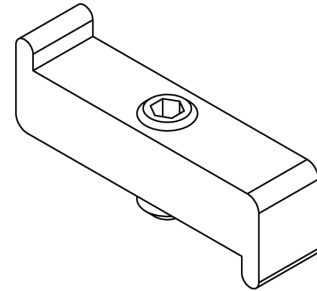
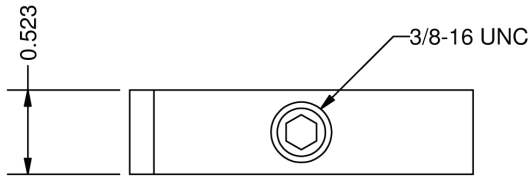
- 6061-T6511 Aluminum

DIMENSIONS

- Length: 1.500"
- Thread: 3/8"-16 UNC
- WT. / EA: 0.018 lbs.

PULLOUT FORCE

- 3000 lbs.



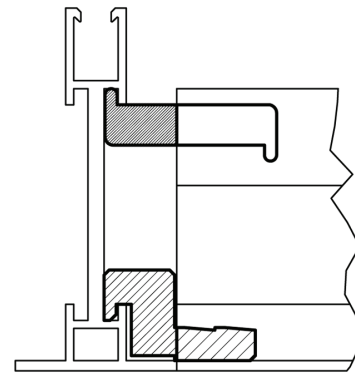
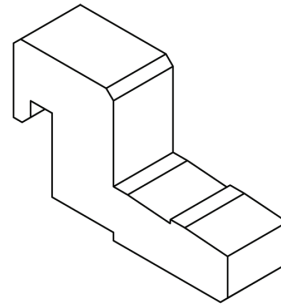
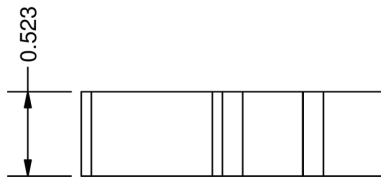
TYPICAL USAGE:
CROSS-TEE TO MAIN CONNECTIONS

MATERIALS

- 6061-T6511 Aluminum

DIMENSIONS

- Length: 2.125"
- Width: 0.523"
- Thread: 3/8"-16 UNC
- WT. / EA: 0.054 lbs.



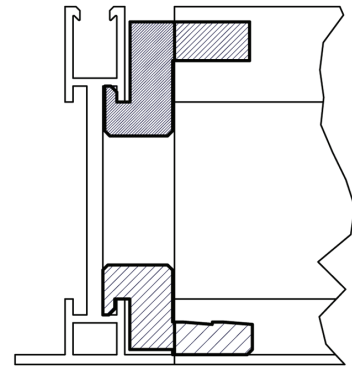
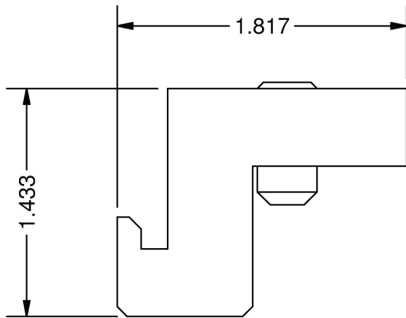
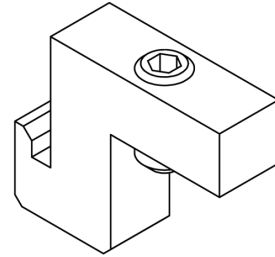
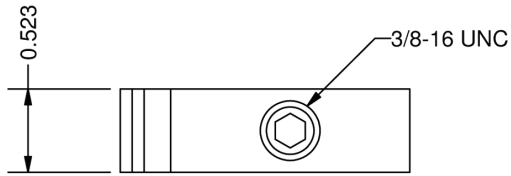
TYPICAL USAGE:
GRID-TO-GRID CONNECTIONS

MATERIALS

- 6061-T6511 Aluminum

DIMENSIONS

- Length: 0.875"
- Width: 0.523"
- WT. / EA: 0.058 lbs.



TYPICAL USAGE:
SAME-HEIGHT GRID CONNECTIONS

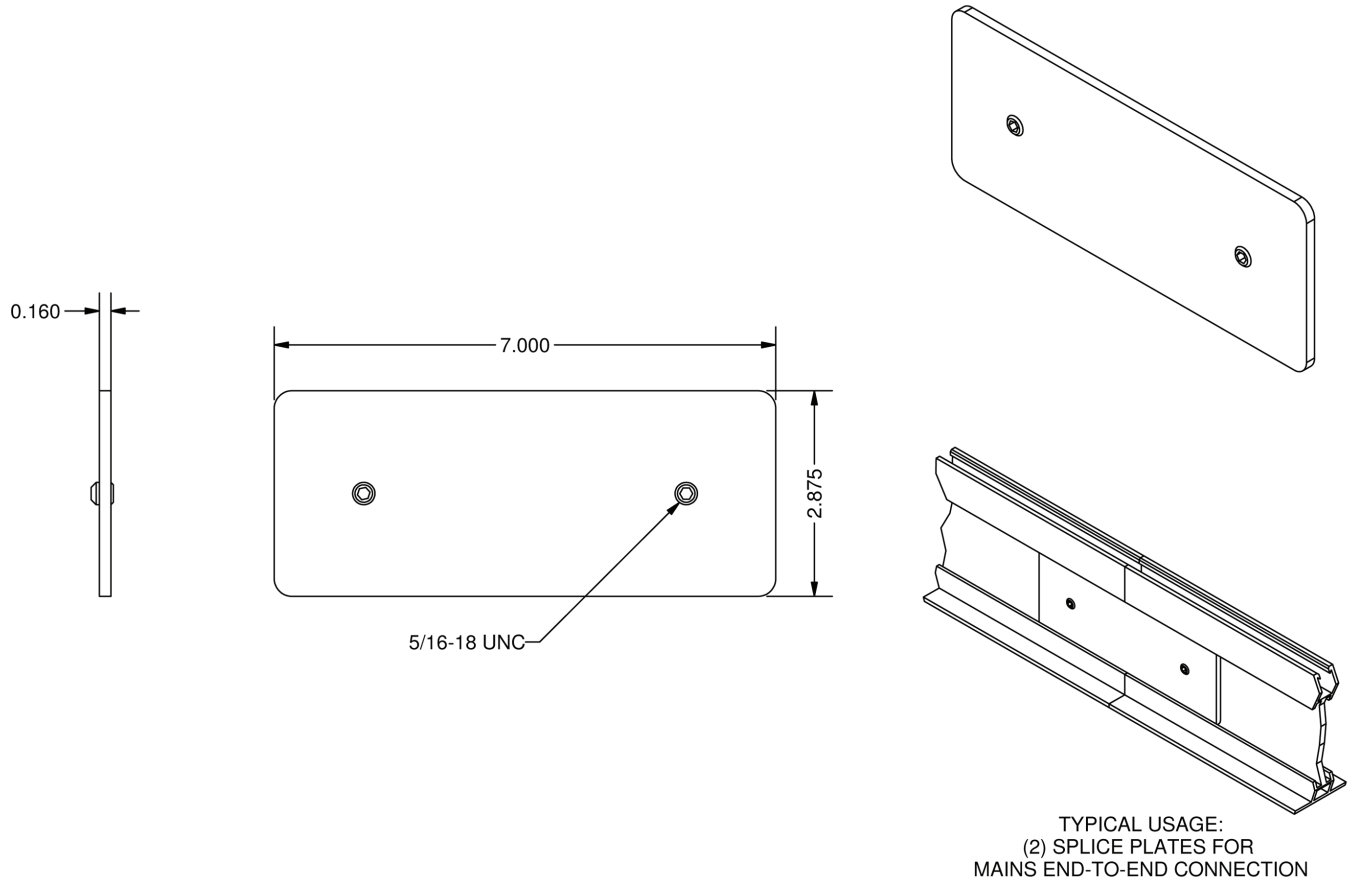
MATERIALS

- 6061-T6511 Aluminum

DIMENSIONS

- Length: 1.817"
- Width: 0.523"
- Height: 1.433"
- Thread: 3/8"-16 UNC
- WT. / EA: 0.066 lbs.

SP-2045

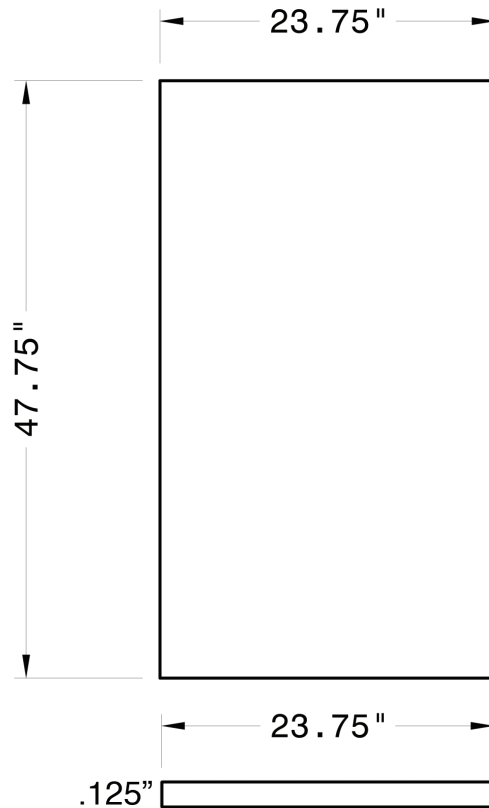


MATERIALS

- 5052 H32 Aluminum

DIMENSIONS

- Length: 7.000"
- Width: 2.875"
- Thickness: 0.160"
- Thread: 5/16"-18 UNC
- WT. / EA: 0.315 lbs.



MATERIALS

- Aluminum Overlay (top)
- Solid HDPE cored
- Adhesive
- Aluminum Overlay (bottom)

FINISH

- White (standard), other colors available

ACTUAL DIMENSIONS

- 23.75" x 47.75"
- 3mm thick

INSTALLATION METHOD

- Drop in
- Securing clips available

STANDARDS

- Fully compliant with Current Good Manufacturing
- UL-Listed
- Class A fire rated

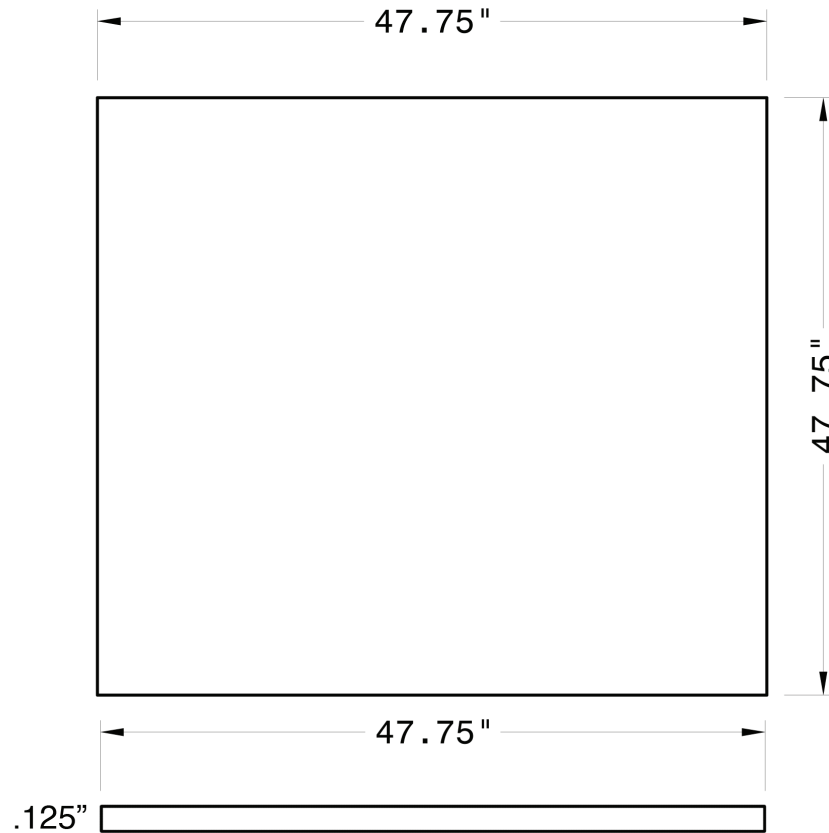
FABRICATING RECOMMENDATIONS

- Cutting: 72-tooth circular saw with reinforced carborundum or carbide-tipped blade.
- Drilling: High speed drill bit (60° cutting angle, with 12°-15° clearance) or hole saw.

CLEANING INSTRUCTIONS

- Use a clean, damp, non-abrasive cotton cloth with a mild liquid detergent or household cleaner.
- Rinse with clean water and a clean, non-abrasive cotton cloth.
- Dry panels off with a soft, clean, non-abrasive cotton cloth.
- DO NOT USE: Cleaners with bleach, acid, alkali or sodium hypochlorite. (examples: bleach, drain cleaners, metal cleaners, oven cleaners, rust removers, tub and tile cleaners, lime scale remover)

*****NOT A LOAD BEARING PANEL*****



MATERIALS

- Aluminum Overlay (top)
- Solid HDPE cored
- Adhesive
- Aluminum Overlay (bottom)

FINISH

- White (standard), other colors available

ACTUAL DIMENSIONS

- 47.75" x 47.75"
- 3mm thick

INSTALLATION METHOD

- Drop in
- Securing clips available

STANDARDS

- Fully compliant with Current Good Manufacturing
- UL-Listed
- Class A fire rated

FABRICATING RECOMMENDATIONS

- Cutting: 72-tooth circular saw with reinforced carborundum or carbide-tipped blade.
- Drilling: High speed drill bit (60° cutting angle, with 12°-15° clearance) or hole saw.

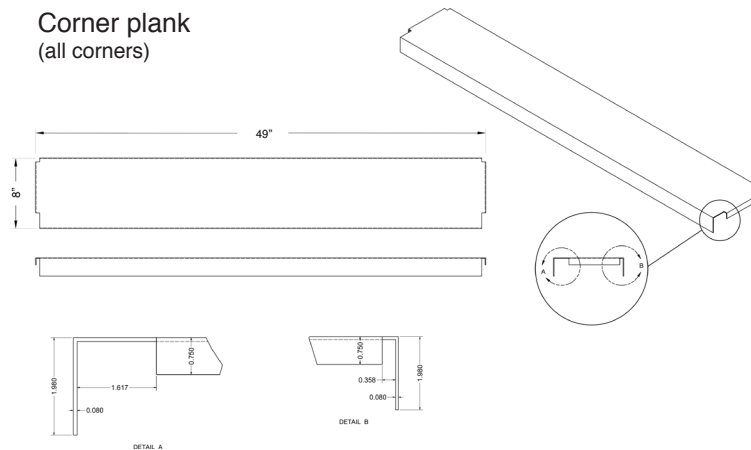
CLEANING INSTRUCTIONS

- Use a clean, damp, non-abrasive cotton cloth with a mild liquid detergent or household cleaner.
- Rinse with clean water and a clean, non-abrasive cotton cloth.
- Dry panels off with a soft, clean, non-abrasive cotton cloth.
- **DO NOT USE:** Cleaners with bleach, acid, alkali or sodium hypochlorite. (examples: bleach, drain cleaners, metal cleaners, oven cleaners, rust removers, tub and tile cleaners, lime scale remover)

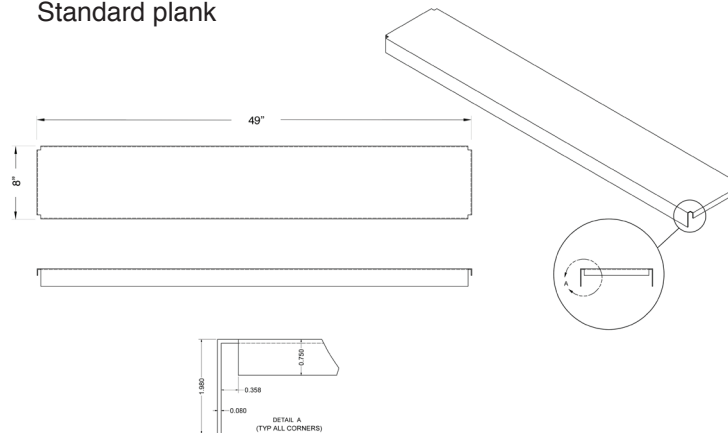
*****NOT A LOAD BEARING PANEL*****

WP-16G-48

**Corner plank
(all corners)**



Standard plank


MATERIALS

- 16ga Steel

FINISH

- Galvanized
- Alternatives: paint, diamond plating, aluminum

DIMENSIONS

- 8" x 49"
- 8.1 lbs. per piece

INSTALLATION METHOD

- Drop in

STANDARDS

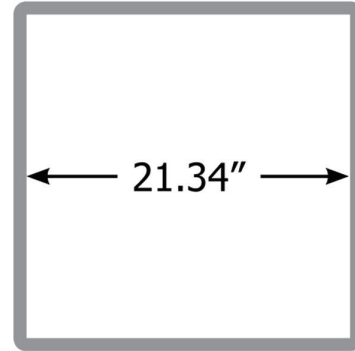
- Fully compliant with Current Good Manufacturing

*****You must at least one of these three conditions when adding a walkable system.*****

- 1. Load bearing panels MUST be installed adjacent to all installed walkways.**
- 2. OSHA approved railings MUST be installed along all walkways.**
- 3. The ceiling system MUST have 100% walkable coverage.**



23.7"



21.34"

FINISH

- Silver

DIMENSIONS

- Outside Dimensions: 23.7" x 23.7" x 2.1"
- Interior Dimensions: 21.34" x 21.34"
- 9.7 lbs. per piece

PERFORMANCE SUMMARY

- Efficacy: 91LPW
- Delivered Light Output: 3300 Lumens
- Input Power: 44 Watts
- CRI: Ra>80
- DLC CCT: 4000k
- Input Voltage: 120-277 VAC
- Input Current: 0.4-0.16A
- THD: <20% (at 277V)
- Standard Warranty: 5 years
- Standard Lifetime: Designed to L70 minimum
- 50,000 Hours
- 0-10v dimming: 10%-100% smooth linear dimming
- Sign Current: 0.04-0.2MA
- Beam Angle: 120 degree

INSTALLATION METHOD

- Recessed, Drop in

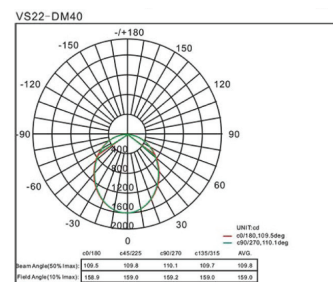
STANDARDS

- Fully compliant with Current Good Manufacturing

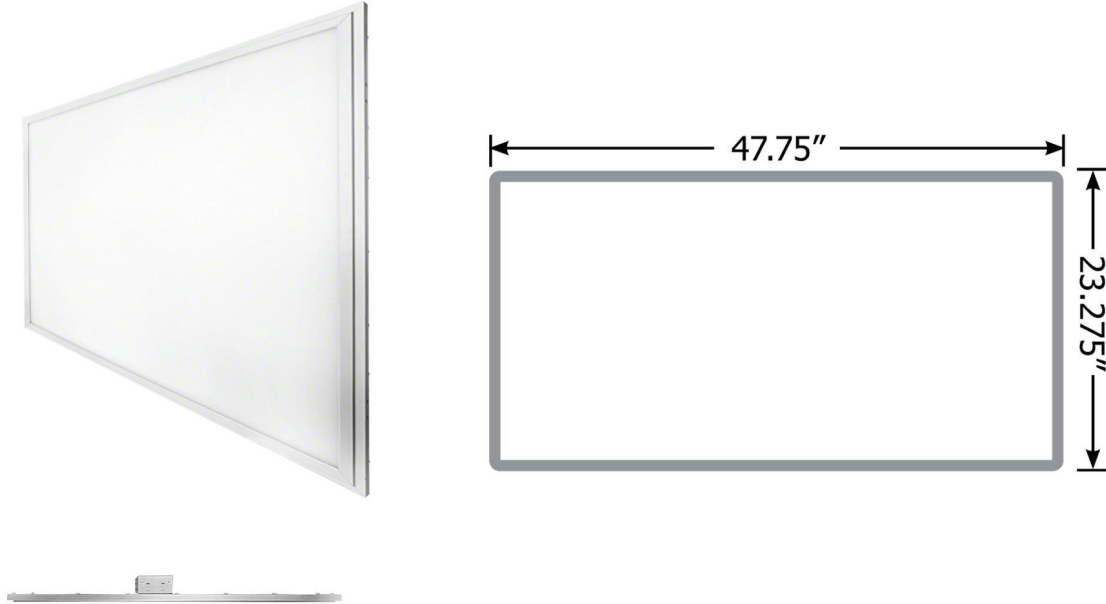
Colors

- SLP2.2-45C - 2'x2' Cool White
- SLP2.2-45N - 2'x2' Natural White
- SLP2.2-45W - 2'x2' Warm White

Luminous Intensity Distribution Diagram



SLP2.4-50X



FINISH

- Silver

DIMENSIONS

- Outside Dimensions: 47.7" x 23.7" x 2.1"
- 22 lbs. per piece

PERFORMANCE SUMMARY

- Efficacy: 91LPW
- Delivered Light Output: 4600 Lumens
- Input Power: 50 Watts
- CRI: Ra>80
- DLC CCT: 4000k
- Input Voltage: 120-277 VAC
- Input Current: 0.4-0.16A
- THD: <20% (at 277V)
- Standard Warranty: 5 years
- Standard Lifetime: Designed to L70 minimum
- 50,000 Hours
- 0-10v dimming: 10%-100% smooth linear dimming
- Sign Current: 0.04-0.2MA
- Beam Angle: 120 degree

INSTALLATION METHOD

- Recessed, Drop in

STANDARDS

- Fully compliant with Current Good Manufacturing

Colors

- SLP2.4-50C - 2'x4' Cool White
- SLP2.4-50N - 2'x4' Natural White
- SLP2.4-50W - 2'x4' Warm White

Luminous Intensity Distribution Diagram

